

MOORABBIN

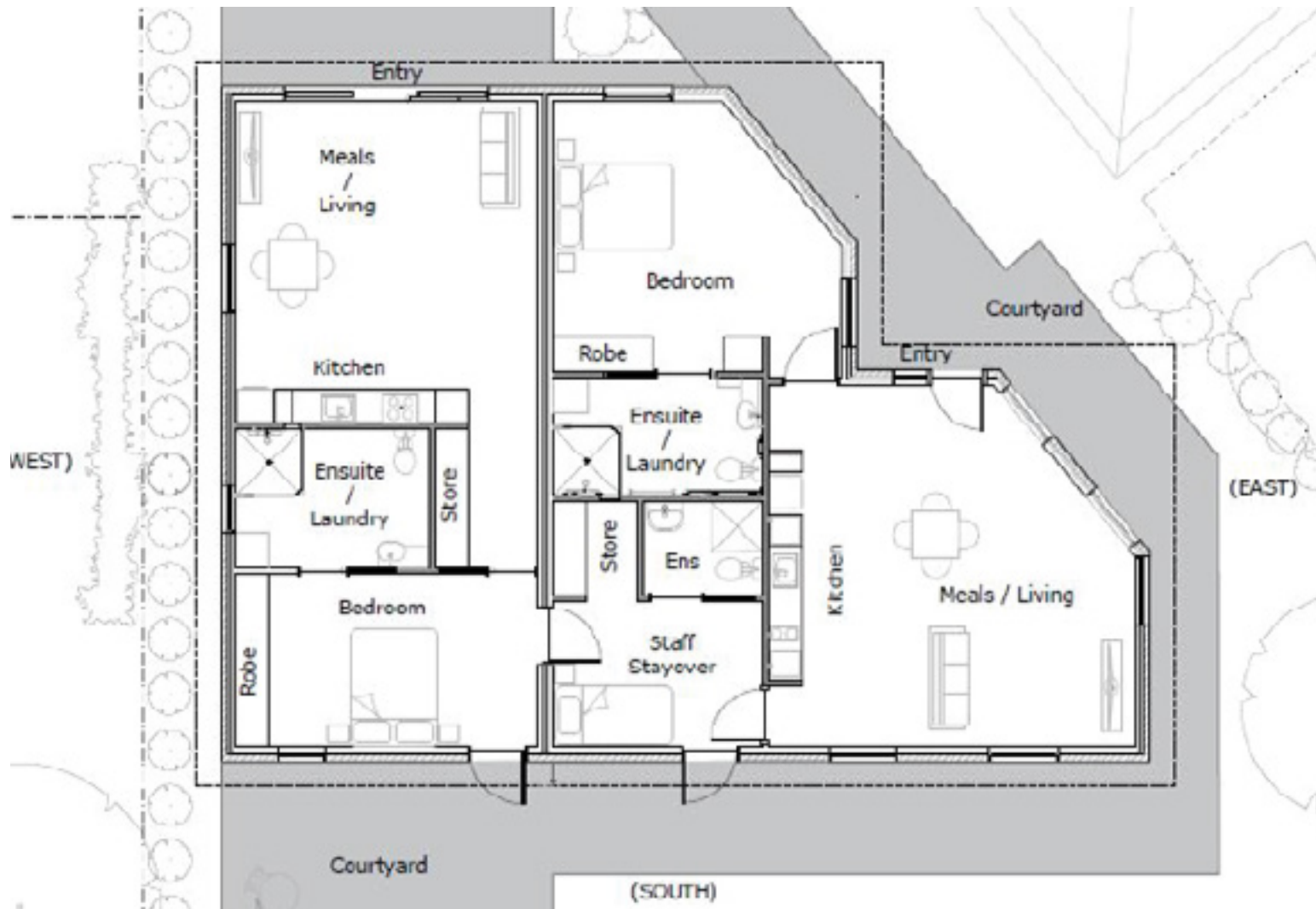
SUPPORTED INDEPENDENT LIVING

NEW BUILD OFFERING HIGH PHYSICAL SUPPORT

If you're looking for a beautiful new home that is assistive technology ready to support you to live more independently, than look no further.

Two separate one bedroom units are currently under construction in Moorabbin.





Images provided are artist's impression.

PROPERTY DETAILS

- One bedroom unit (2 available)
- Large spacious high physical support bedroom
- Fully accessible bathroom
- Separate shared Onsite Overnight Assistance (OOA) room
- Air conditioning and heating
- Shared outdoor courtyard
- 10 metres from bus stop and 1km from Moorabbin train station

ACCESSIBILITY FEATURES

- Ramp access
- Wheelchair friendly
- Ceiling hoist
- Wide pathways and doorframes
- Assistive technology ready

FACTORS TO CONSIDER IF APPLYING

- NDIS Supported Independent Living (SIL) funding required
- SDA funding is preferred (not mandatory)

FOR MORE INFORMATION

Call us on **1300 080 777** or email accommodation@ableaustralia.org.au.

YOUR GOALS. YOUR HOME. YOUR WAY.

SUPPORTED INDEPENDENT LIVING AT ABLE AUSTRALIA

Whether in your own home or one managed by Able, we support you to live as independently as possible. By getting to know you and understanding your interests, likes/dislikes and goals for the future, we can map out the best possible programs to support you at home.

Our flexible, highly skilled staff support you to reach your full potential and enjoy a fulfilling home life.

We assist you to:

- Develop individual program plans that outline goals, aspirations and desires for independent living.
- Develop and maintain friendships and community connections.
- Access social and recreational activities.
- Manage and attend appointments.
- Complete forms and other forms of communication.
- Maintain a household.
- Manage accommodation and tenancy obligations.

We will also work with you to develop increased independence through skill development in areas such as:

- Financial and money management.
- Shopping and household tasks, including cooking and domestic duties.
- Social skills.
- Using public transport.

Any questions? Send us an enquiry [here](#).

