



RISDON VALE

SUPPORTED INDEPENDENT LIVING

AVAILABLE JUNE 2021

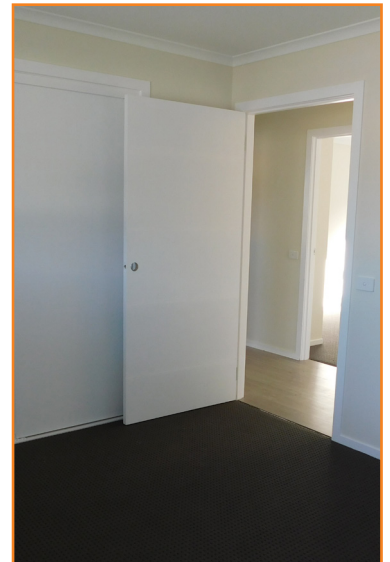
Located in Risdon Vale, Tasmania is this fantastic new two bedroom home. With improved liveability this home is conveniently located across the road from local shops including Post Office, Pharmacy, Take away and newsagency.



This brand new homes offers a lightfilled open plan kitchen and living area. Spacious ensuite bathroom in the first bedroom. Enjoy outdoor living with outdoor seating and barbeque.

PROPERTY DETAILS

- 2 bedrooms
- 2 bathroom with walk in shower
- Spacious kitchen
- New established garden
- Onsite parking
- Internet/WiFi available
- Secure, covered paved areas
- Hand rails in ensuite bathroom.
- Suitable for large mobility aids.



FACTORS TO CONSIDER IF APPLYING

- Wheelchair accessible
- A new resident would need to have an NDIS plan with Supported Independent Living (SIL) funding.



INSPECTIONS AND MORE INFORMATION

Contact our Intake Team on 1300 225 369 or intake@ableaustralia.org.au